

# SP-8 PARTS LIST: A

SCRN0832X0625VO - Lower Rail Screws

SCRN0832X0750 - Upper Rail Screws (x2)

SP8109BLK - Upper Tactical Rail

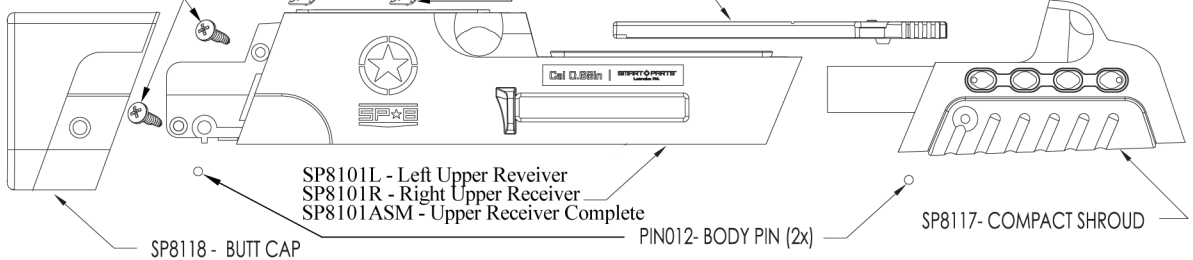
SCRH0818X0750PXZ - Upper Receiver Screws

SP8103BLK - Feed Neck

SP8124BLK - Upper Handle

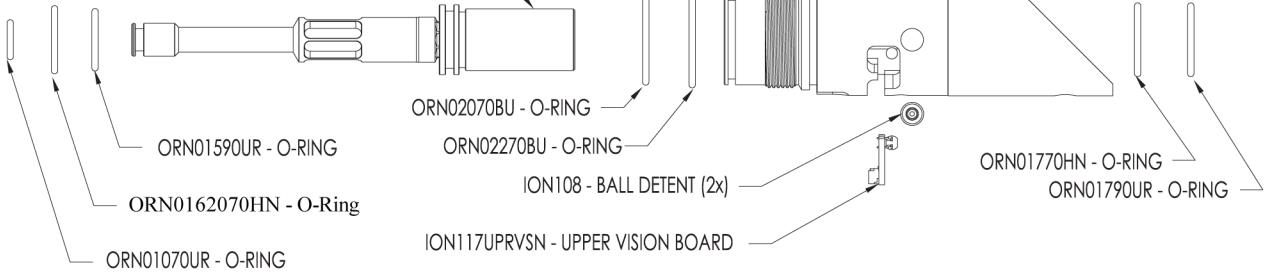
NUT001 - Flat Nut (x2)

SP8105 BLK - Round Activator



ION109ASM - Bolt Assembly

SP8102 - BODY BREECH



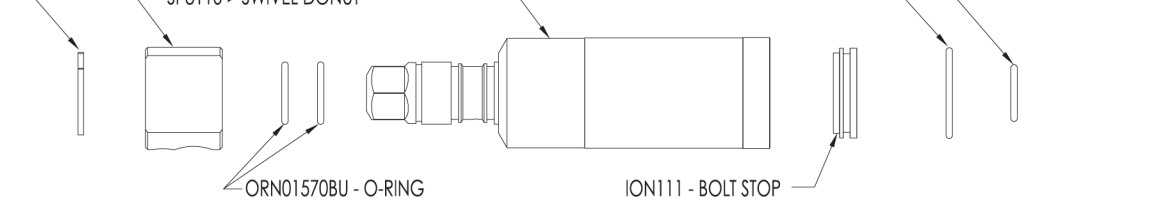
CLP004 - DONUT CLIP

SP8110 > SWIVEL DONUT

ION104 - FIRE CHAMBER

ORN02070UR - O-Ring

ORN01470UR - O-RING



ELB1032X532PTCBNJ - 4MM BANJO FITTING

HOS4MMBLK875 - 4MM Hose

ISL103 - SOLENOID BARB

BUM006 - FOAM DISC

ORN0401070BU - BARB SEAL

BND001 - RUBBER BAND

HOS18BLK - 1/8" Hose

ELB1032X18PTCBNJ - 1/8" BANJO FITTING

ORN0401070BU - BARB SEAL

ION210 - Solenoid

ISL103 - SOLENOID BARB

RION117LOVSNSUS - LOWER CIRCUIT BOARD US

ION118 - Vision Wiring Harness

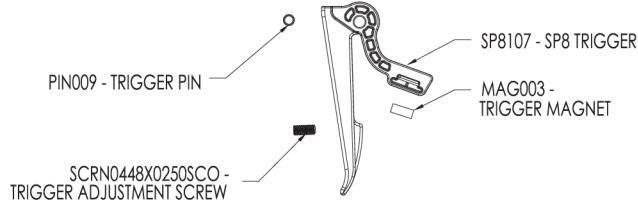
HOS4MMBLK4025 - 4MM Hose

ELB1032X532PTCBNJ - 4MM BANJO FITTING

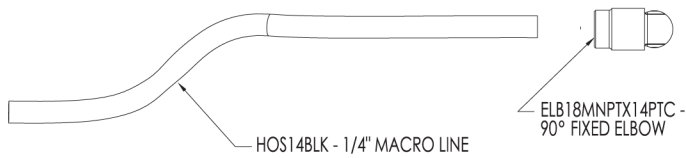
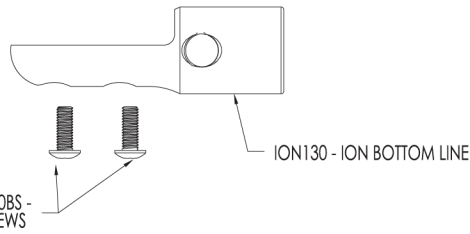
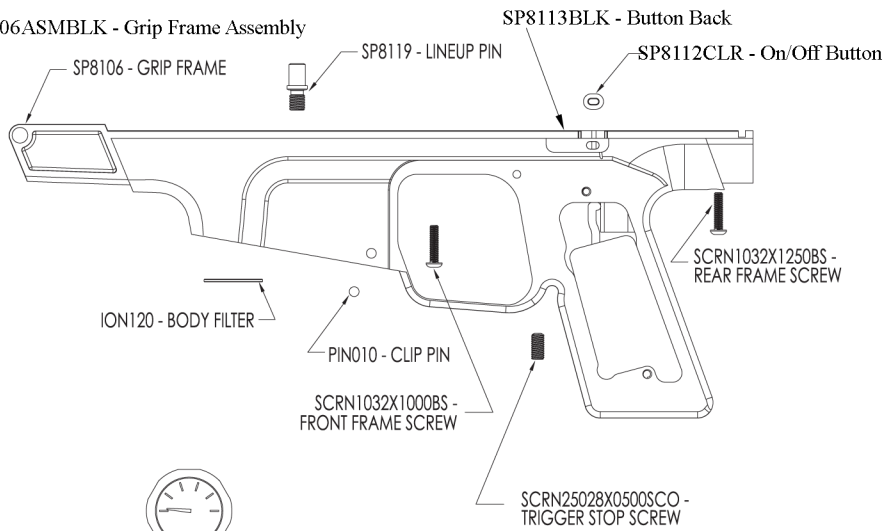
Yellow = Diagram Correction  
 Courtesy of SmartpartsParts.com

# SP-8 PARTS LIST: B

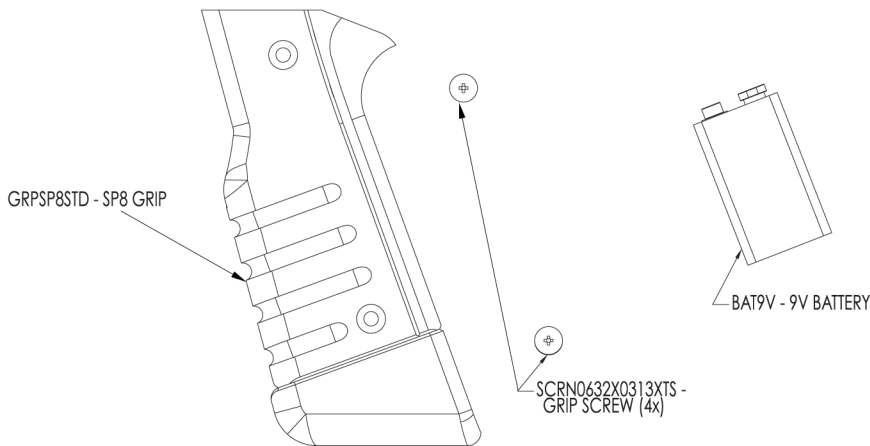
## SP8107ASM - SP8 Trigger Assembly



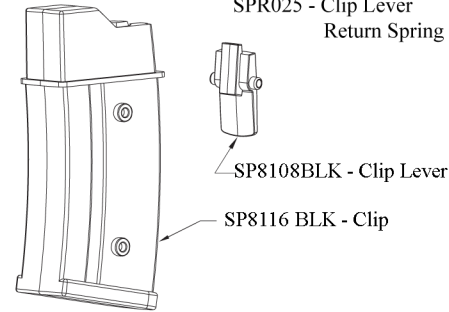
## SP8106ASMBLK - Grip Frame Assembly



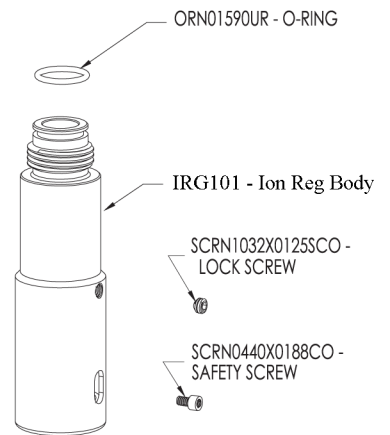
## GRPS8STD - SP8 GRIP



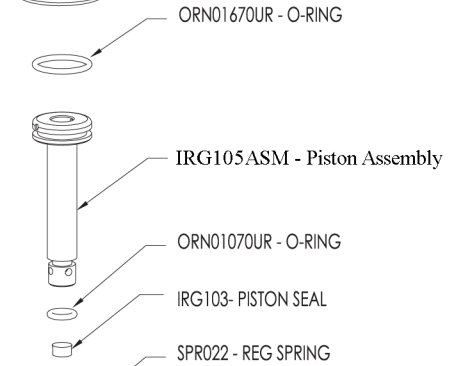
## SPR025 - Clip Lever Return Spring



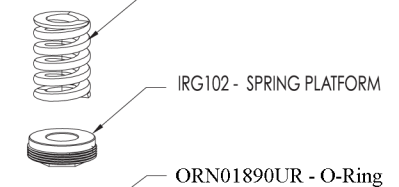
## ORN01590UR - O-RING



## ORN01670UR - O-RING



## IRG102 - SPRING PLATFORM



## ORN01890UR - O-Ring

